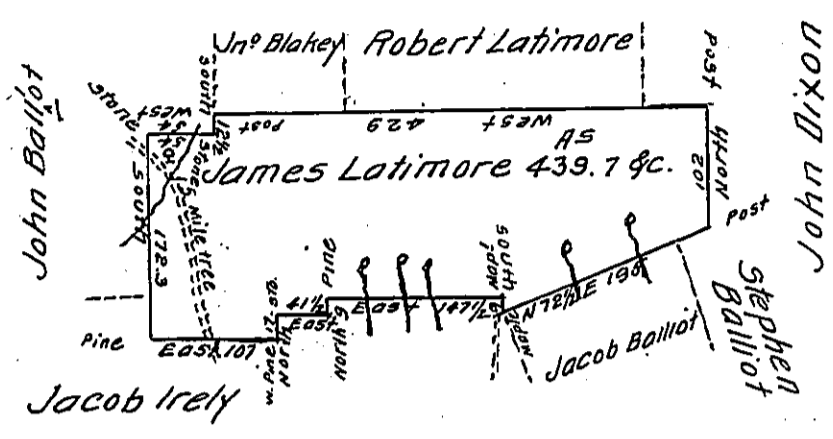


Hazle
Luzerne



A Draught of a Tract of Land called — situate adjoining land
 surv^d for Jacob Irely, on the Waters of Black Creek, including
 the 15 mile tree on the wagon road from Berwick to Fort Allen, in the
 County of Northumberland. Containing Four hundred and thirty
 nine Acres & ⁷/₁₀ and allow^e, surv^d for Jas. Latimore the 8th
 day of Sep^r 1793, by Virtue of a Warrant dated the 13th day
 of June 1793.

To W^m Gray
 Daniel Brodhead Esq } D.S.
 Surv^r Gen^l }

IN TESTIMONY that the above is a copy of the original remaining on file in
 the Department of Internal Affairs of Pennsylvania, made
 conformably to an Act of Assembly approved the 16th day of
 February, 1833, I have hereunto set my Hand and caused
 the Seal of said Department to be affixed at Harrisburg,
 this twenty fourth day of January 1911.

Nery Houet
 Secretary of Internal Affairs.